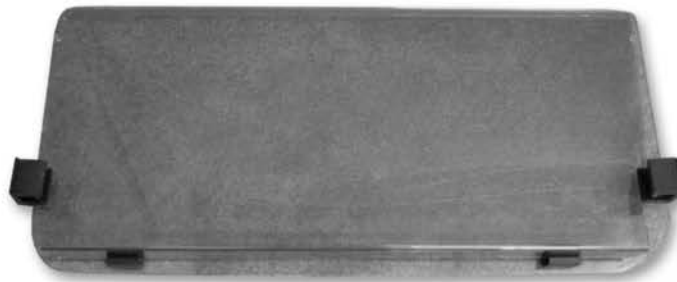




## CLUB CAR DS WINDSHIELD INSTALLATION INSTRUCTIONS

MJWS1002

**INCLUDED:**  
WINDSHIELD  
7 STRUT BRACKETS



Windshield

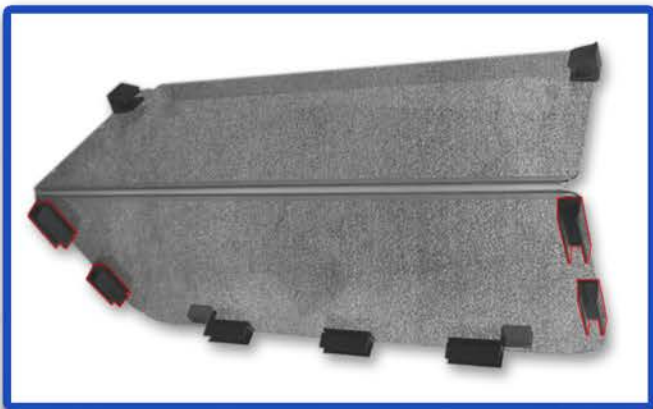


7 Strut Brackets

Remove plastic from all four sides of windshield. Attach two brackets to the inside of the windshield holders as shown and center the third bracket.



Attach side brackets by placing the top bracket just below the acrylic hinge. Attach second bracket four inches from the bottom of the top bracket.





3  
Attach windshield to front struts  
as shown.

4  
Clamps on the windshield attach  
to the struts when you want the  
windshield lifted.



VISIT [WWW.MYMADJAX.COM](http://WWW.MYMADJAX.COM) FOR ONLINE VIDEOS

