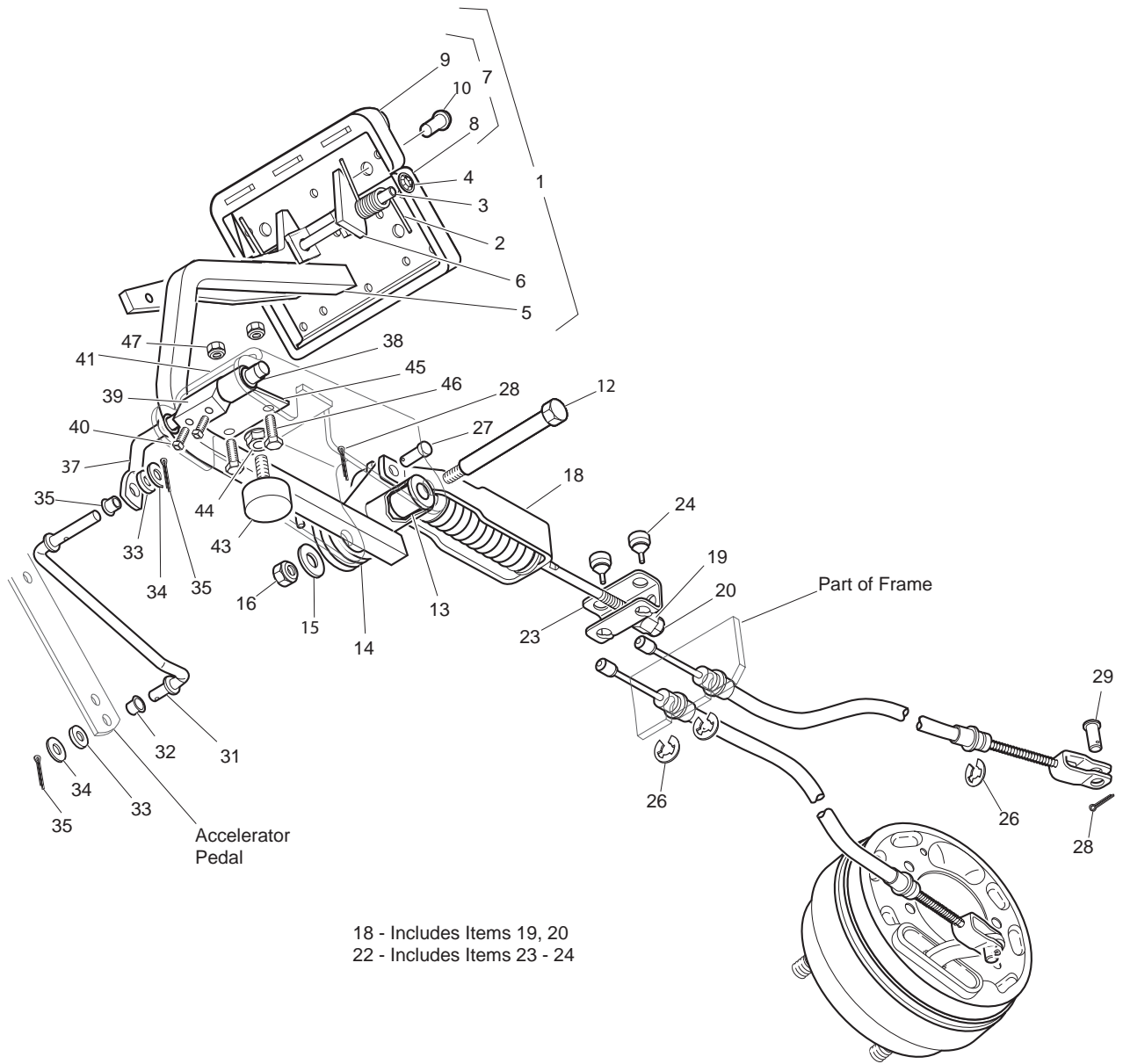


BRAKES - MECHANICAL



Ref Brm 8-1

BRAKES - MECHANICAL

THE USE OF NON U.L. PARTS WILL VOID ANY U.L. LISTING.

When ordering parts, please specify the model and serial number of the product.

* Indicates a component that is not available as an individual part.

G** Indicates consult Customer Service Department for additional information.

ITEM	PART NO.	1 2 3 4 5	DESCRIPTION	QTY.
30				
31	70601-G01		KICK-OFF LINK.....	1
32	17838-G1		NYLON BUSHING.....	2
33	20835-G1		TEFLON WASHER, 3/8"	2
34	00559-G8		WASHER, 5/16"	2
35	10387-G3		COTTER PIN, 3/32" X 3/4" LG.....	2
36				
37	70098-G01		KICK-OFF CAM PIVOT.....	1
38	10097-G6		FLANGED BEARING	2
39	70587-G01		KICK-OFF CAM.....	1
40	71215-G01		SETSCREW, 1/4 - 20 X 1/2" LG.....	2
41	14134-G4		SPACER	1
42				
43	70113-G01		ADJUSTABLE BUMPER	1
44	11027-G1		LOCK NUT, 5/16 - 18	1
45	70080-G02		CATCH BRACKET	1
46	00414-G6		BOLT, 1/4 - 20 X 3/4" LG	2
47	14390-G4		LOCK NUT, 1/4 - 20 (STAINLESS STEEL).....	2
48				
49	74874-G01		BRAKE PEDAL ASSEMBLY (WITH BRAKE LIGHTS) (INCLUDES ITEMS 50 - 78).....	1
50	*		BRAKE PEDAL.....	1
51	74724-G01		PARK BRAKE PEDAL	1
52	70274-G01		BRAKE/PARK BRAKE PEDAL PAD KIT (INCLUDES ITEMS 53 - 55).....	1
53	*		SERVICE BRAKE PAD	1
54	*		PARK BRAKE PAD.....	1
55	15766-G1		OVAL RIVET, 3/16" x 7/16" LG.....	9
56				
57	70258-G03		BRAKE PEDAL PLATE.....	1
58	70682-G01		PIVOT PIN	1